

# Z-90 NOVAL / Z-70



## EXTERNAL BLINDS

- the most widely used way of exterior shading
- they are an original and functional complement of modern facades
- they shade the interior while keeping ventilation options
- the amount of light and the temperature inside your home are regulated by the pulling and tilting the blinds
- in summer they prevent overheating of the interior
- they help save costs for air conditioning



**CLIMAX**   
Sunscreens by Servis Climax a.s.



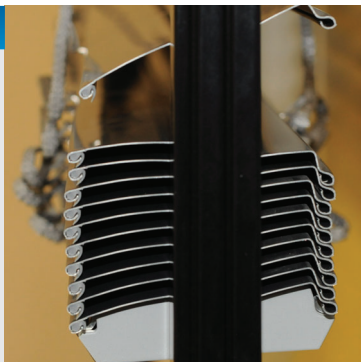


External blinds **create a pleasant and healthy environment** for your loved ones.

They are currently the most widely used way of exterior shading. They allow to ventilate rooms via opened windows while keeping the possibility of light regulation.

### CONSTRUCTION

- » side guiding in visible or built-in guide rails, or in a wire
- » Z-shaped slat
- » the ladder is UV resistant, reinforced by Kevlar fibre which minimizes length deformation length occurs



### SLATS

#### Z-90 NOVAL

- » slat width 90 mm
- » 23 standard colours

#### Z-70

- » slat width 70 mm
- » 10 standard colours

- » with a rubber sealing inserted for a perfect and silent closing action



### INSTALLATION

- » in the window opening – the stack of slats reduces the clearance of the window, a cover plate can be used
- » above the window opening – the stack of slats does not affect the window clearance, can be delivered with holders for the built-in version
- » into the construction lintel
- » into a built-in box



### SELF-SUPPORTING SYSTEM

- » the head rail is attached to the guide rails which are anchored on the window frame or the façade via brackets
- » standard version with square guide rails
- » can be completed with a cover plate



### OPTIONS

- » the head rail incl. the stack of slats can be hidden under a cover plate, or into a special box built-in under the plaster
- » the façade of the house is not spoilt with anchoring elements and looks very clean








### CONTROLS

- » manual control: crank with a gearbox
- » motor control: electric motor 230 V controlled by
  - » a local switch
  - » control automatics
  - » a remote control
  - » smart mobile devices (TAHOMA system)



### PLACEMENTS OF EXTERNAL BLINDS

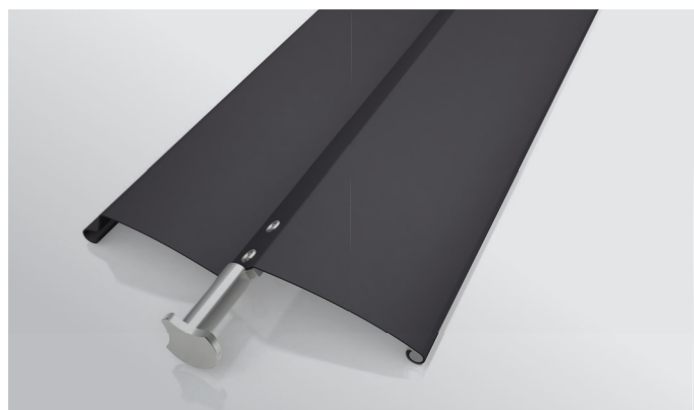
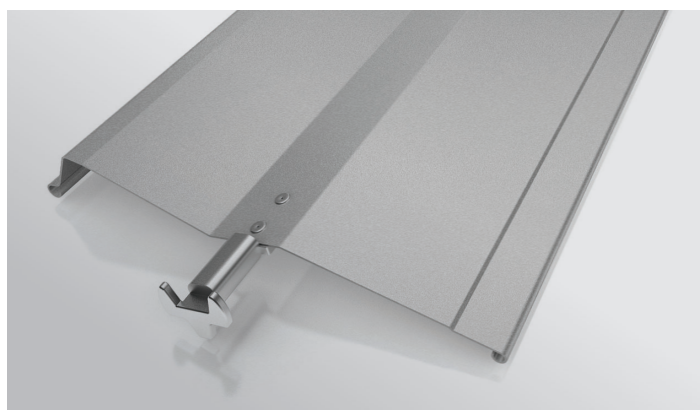
Without a cover of the head rail	With a cover of aluminium sheet	Self-supporting version COMFORT system	Built-in box	Top mounted lintel HELUZ
				

### Z-90 NOVAL

with slat width 90 mm / shades area up to 20 m<sup>2</sup>

### Z-70

with slat width 70 mm



### TECHNICAL DATA

#### Limit dimensions

Type	Operation	Width (cm)		Height (cm)		Max. area of 1 blind (m <sup>2</sup> )	Max. width when connected (m <sup>2</sup> )		Max. area when connected
		Min.	Max.	Min.	Max.		Operation on the side	Operation in the middle	
Z-90 NOVAL	CRANK	50	500	50	500	8	6	12	8
	MOTOR					20			34
Z-70	CRANK	50	500	50	500	8	6	12	8
	MOTOR					20			34





EXTERNAL BLINDS



VENETIAN BLINDS



INTERIOR FABRIC SHADING



PERGOLAS AND CONSERVATORIES



CLIMAX



FACADE AWNINGS



INSECT SCREENS



AWNINGS



ROLLER SHUTTERS

**CLIMAX**   
Sunscreens by Servis Climax a.s.

UPDATE: 09. 04. 2020

The information contained in this leaflet is purely informative. For more information on products of the SERVIS CLIMAX company please contact our nearest business partner. The complete offer, including technical support, is found on our website [www.servisclimax.eu](http://www.servisclimax.eu)